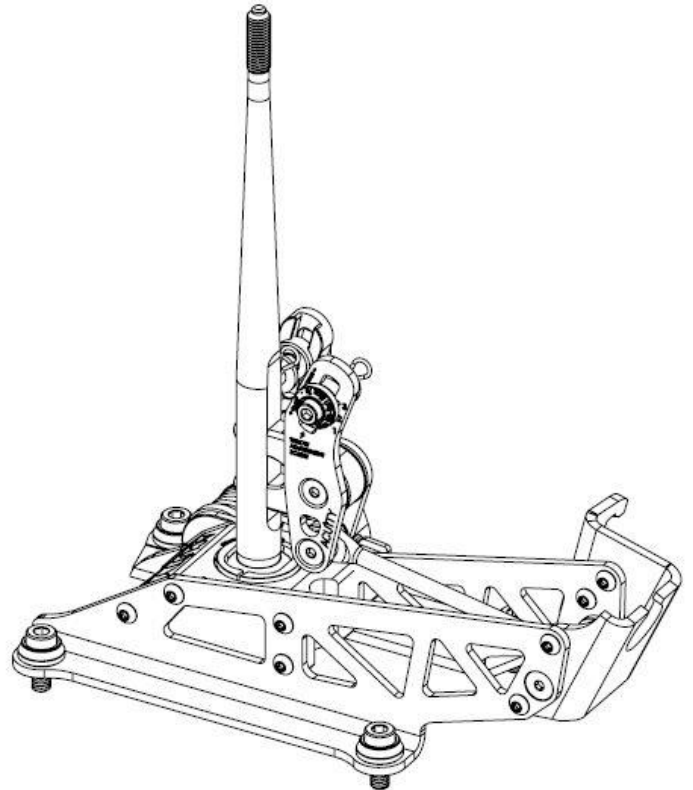
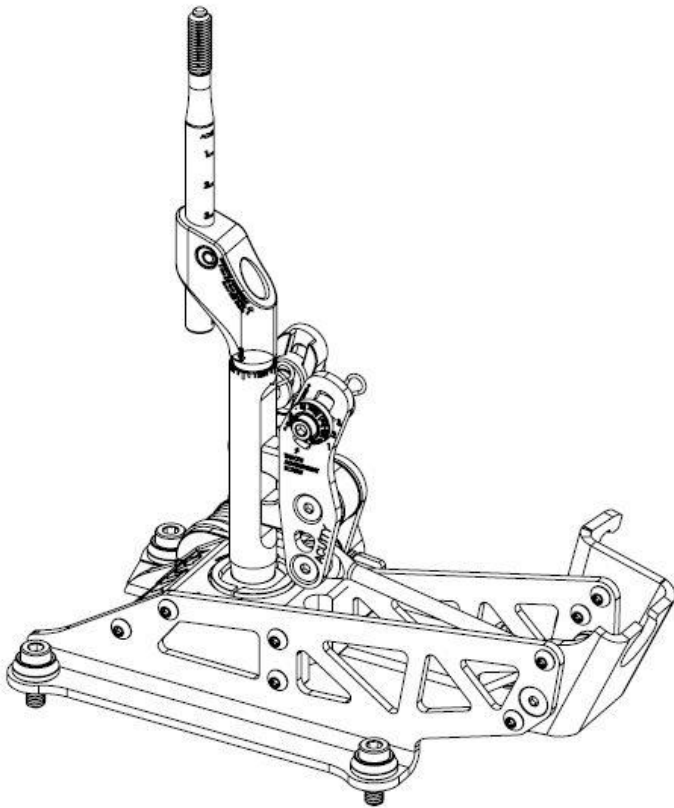


# ACUITY



**1937 - 2-Way and 4-Way Adjustable Performance Short Shifter for the Acura RSX**

## **Install Guide**

**Applications:**

2002-2006 Acura RSX-S and RSX (Manual Transmission)

2002-2006 Honda DC5 Integra Type R

2001-2005 7th Gen Honda Civic (Manual Transmission)

K-Swaps equipped with RSX, RSX-S, DC5, or 7th Gen Civic gearbox (when used with shifter adapter plate)

# ACUITY

## Contents

Tool List.....	3
Install Info .....	4
Step 1: Remove Shift Knob and Boot Trim Panel .....	5
Step 2: Remove Power Outlet Panel .....	9
Step 3: Remove Center Console.....	11
Step 4: Disconnect Shifter Cables .....	17
Step 5: Remove OEM Shifter.....	23
Step 6: Install ACUiTY Short Shifter.....	27
Step 7: Install Shifter Cables.....	29
Step 8: Install Upper Shift Lever, Position/Height Adjustment (4-Way Version ONLY) ..	35
Step 9: Gate Spacing Adjustment (2-Way and 4-Way Versions) .....	36
Step 10: Gear Throw Adjustment (2-Way and 4-Way Versions) .....	37
Step 11: Reinstall Center Console and Shift Knob .....	38
Revision History .....	39



## TOOL LIST

- Ratchet and extension
- 12mm hex socket
- 5mm and 6mm Allen socket
- #2 Phillip's head screwdriver short and medium length
- #1 and #2 flat head screwdriver
- Torque wrench capable of 16 ft-lbs (22 Nm)
- Small flat-head screwdriver or pick tool
- Interior trim removal tools
- Wire cutters



## Skill Level: Intermediate

We recommend that only gear heads with a little experience attempt this install. If you've done simple car maintenance operations like oil changes, air filter changes, and accessory belt changes, you can probably handle this. If you have no experience working on cars, we recommend finding a more experienced friend or shop to help you with this install.



## Typical Install Time

1hr30min

***IMPORTANT:** Only qualified technicians should attempt installation. ACUITY LLC assumes no liability for issues arising from improper installation.*



## Package Contents

Please inspect all of the parts that came with your kit before attempting installation. Your shifter packaging should include ONLY the items listed below.

### 2-Way Version

- 1x ACUITY 2-Way Short Shifter Assembly
- 4x M8 Socket Head Cap Screws
- 4x Purple Mounting Washers

### 4-Way Version

- 1x ACUITY 4-Way Short Shifter Assembly
- 1x Upper and Midrod Assembly
- 4x M8 Socket Head Cap Screws
- 4x Purple Mounting Washers



## What to Expect

Expect a significantly different and more sporty shifting experience, from your stock shifter. At first, it may take some time to adjust to the extreme reductions in throw and gate spacing, as well as the stiffer centering action, but in a short while, you will find the shifter's precision, short throws, narrow gates and snappy centering making every driving experience an opportunity to put a smile on your face. You should find that the improved precision will lend to more confidence in quick shifts and more consistent shifting in general. Because the shifter is made from much stiffer materials than the stock shifter, shifts will feel more rigid and confidence-inspiring during spirited driving. The discerning driver will notice more feedback from the gearbox compliments of this rigid construction; this can be useful in determining the quality of your footwork on the clutch and shift timing. The exact shifting feel is largely up to you, and we highly suggest you take time tuning the gate spacing, throw, knob position, and height to your liking before reinstalling the console. The exact ratio of throw distance to gate spacing is a very personal matter; take advantage of the adjustments to make the H-pattern perfect for you. The joints in Acuity's shifter are carefully designed to be low-friction and very efficient at wear-compensating. This means that your shifter will give you a much longer service life than an OEM shifter before any signs of wear are noticeable. Please find a detailed list of throw and gate adjustment ranges, listed by application on pages 35-37.

# ACUITY

## STEP 1 - Remove Shift Knob and Boot Trim Panel

Securely grip the boot collar at the base of the shift knob and pull down to unclip the boot collar from the shift knob.



## STEP 1 Cont. - Remove Shift Knob and Boot Trim Panel

Loosen your shift knob and remove.



# ACUITY

## STEP 1 Cont. - Remove Shift Knob and Boot Trim Panel

Slide the cup holder cover forward by pressing the “cup” button and slide forward. Then, grip the front side of the boot trim and pull upwards to unclip and release the front side.



## STEP 1 Cont. - Remove Shift Knob and Boot Trim Panel

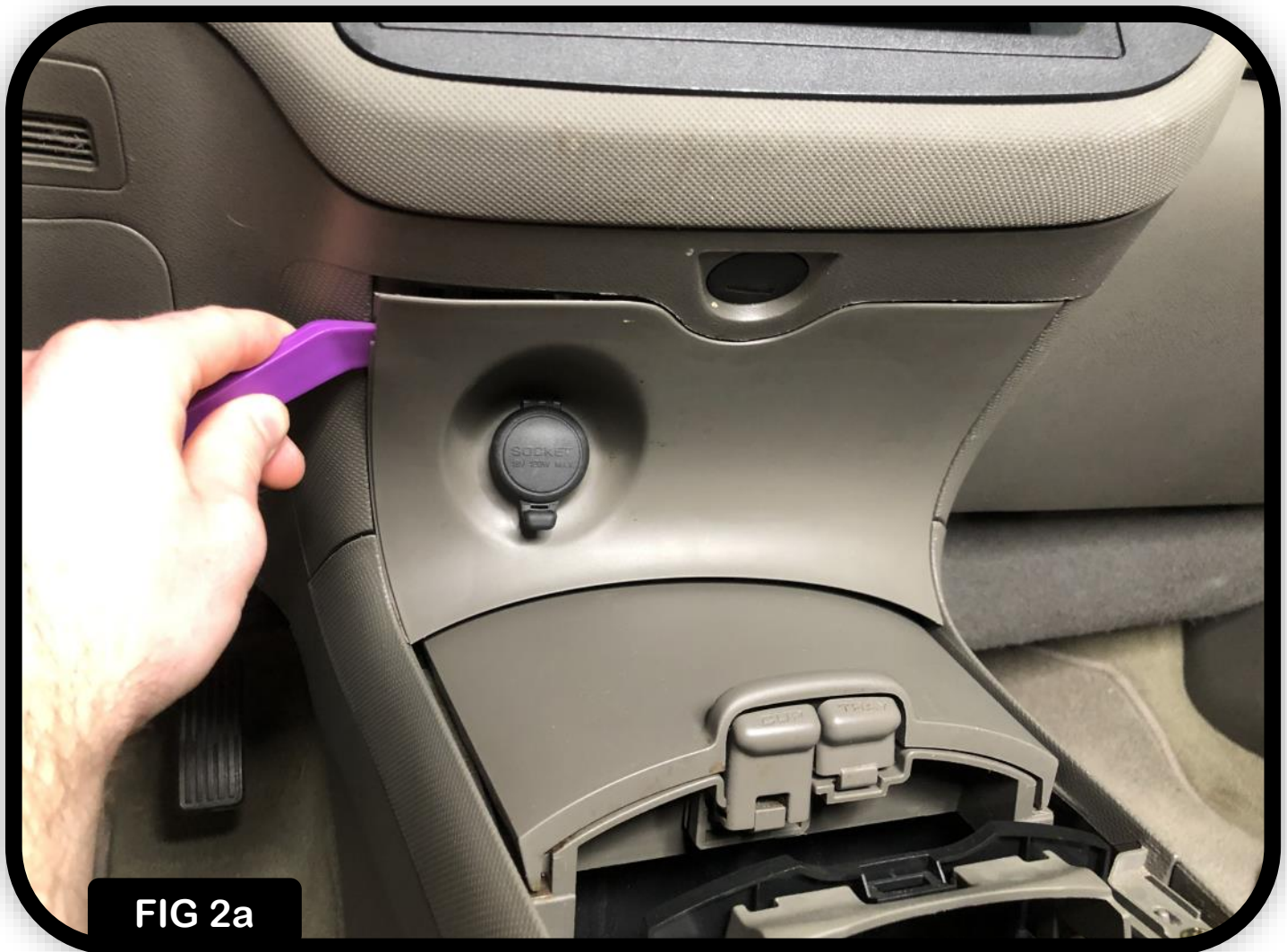
Pull the parking brake to the top position for added clearance. Then, work front to back on the plastic boot trim, releasing the clips on the side and then finally the rear and remove.





## STEP 2 - Remove Power Outlet Panel

Using a small trim panel removal tool, pry the top left and top right corners of the power outlet panel to unclip each of the (2) top clips. Once the top is released, carefully pull the panel towards the rear of the car to release the lower clips on each side.



## STEP 2 Cont. - Remove Power Outlet Panel

Using a #1 flathead screwdriver, pry the locking tab upwards from the pin side of the connector to release, and place the panel aside.



## STEP 3 - Remove Center Console

Using a #2 Phillip's head screwdriver, remove the (2) front mounting screws circled below.



## STEP 3 Cont. - Remove Center Console

Using a short #2 Phillip's head screwdriver, remove the (2) plastic clips circled below in the center by unthreading the center pin and removing.



# ACUITY

## STEP 3 Cont. - Remove Center Console

Using a #2 Phillip's head screwdriver, remove the (2) screws at the rear bottom on each side of the center console. *NOTE: To make removal easier, it is best to slide the front seats to the forward-most position.*



FIG 3c

## STEP 3 Cont. - Remove Center Console

With the (2) rear screws removed, lift up on the rear of the center console to gain access to the rear power outlet connector and disconnect the connector as shown below.



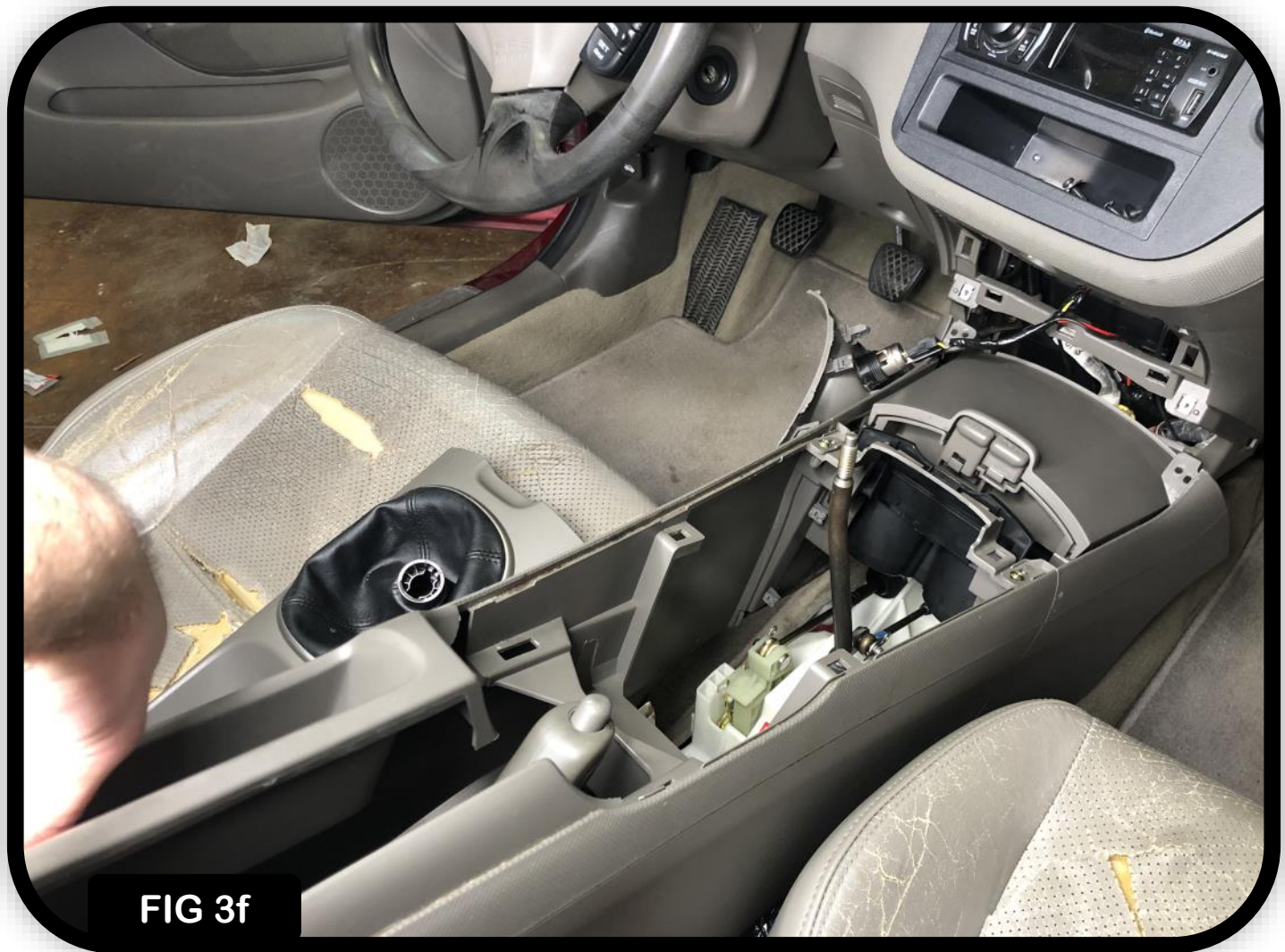
## STEP 3 Cont. - Remove Center Console

Release each hook on the forward-most panels of the center console near the driver and passenger footwell by simply pulling outwards.



## STEP 3 Cont. - Remove Center Console

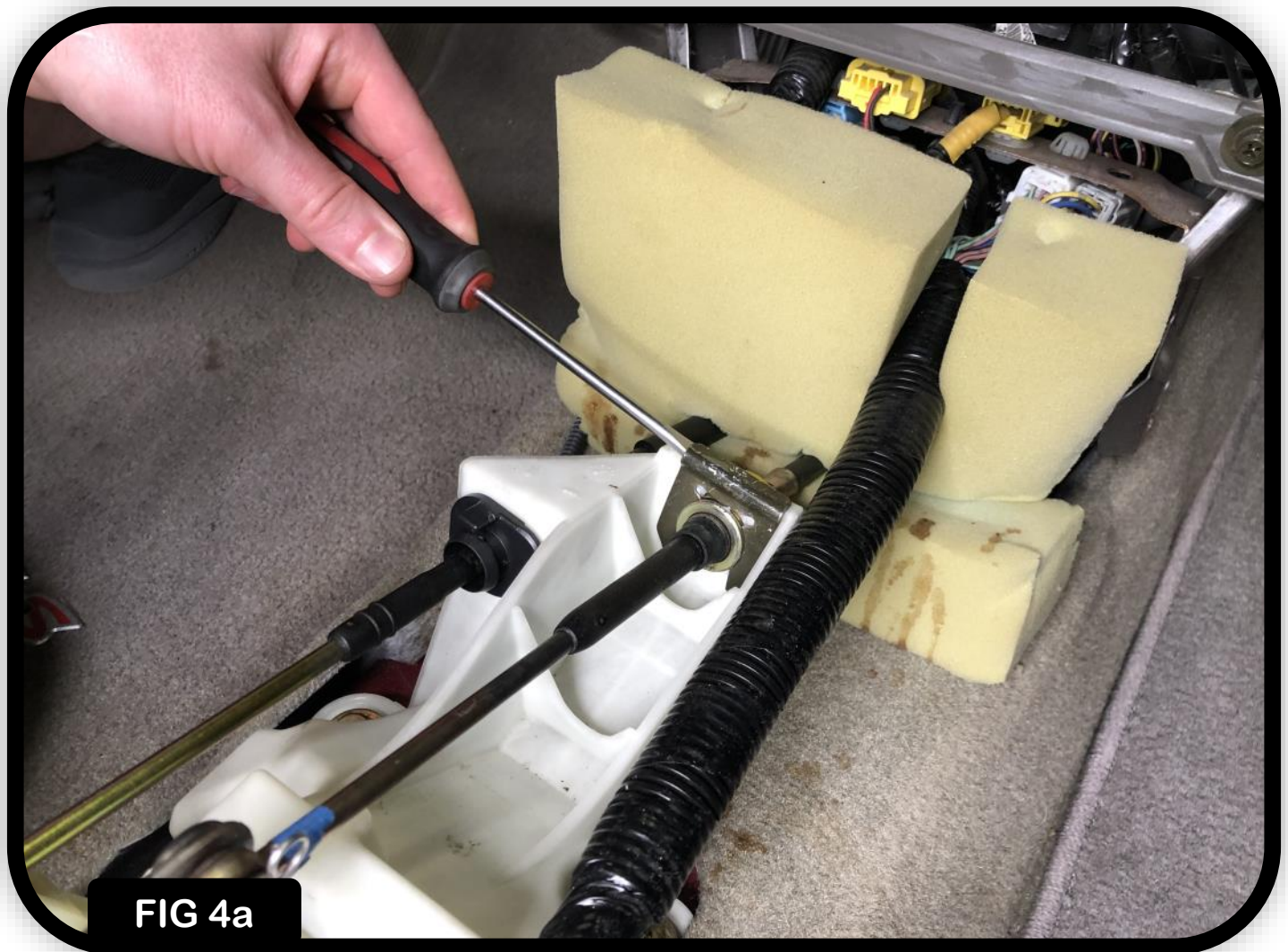
Lastly, pull the center console upwards free of the parking brake handle, and then backwards. Once free, place in the back seat.





## STEP 4 - Disconnect Shifter Cables

With the center console now removed, start by removing the gear change cable first. Using a flat head screwdriver, pry upwards on the C-clip retainer as shown below, and set aside.



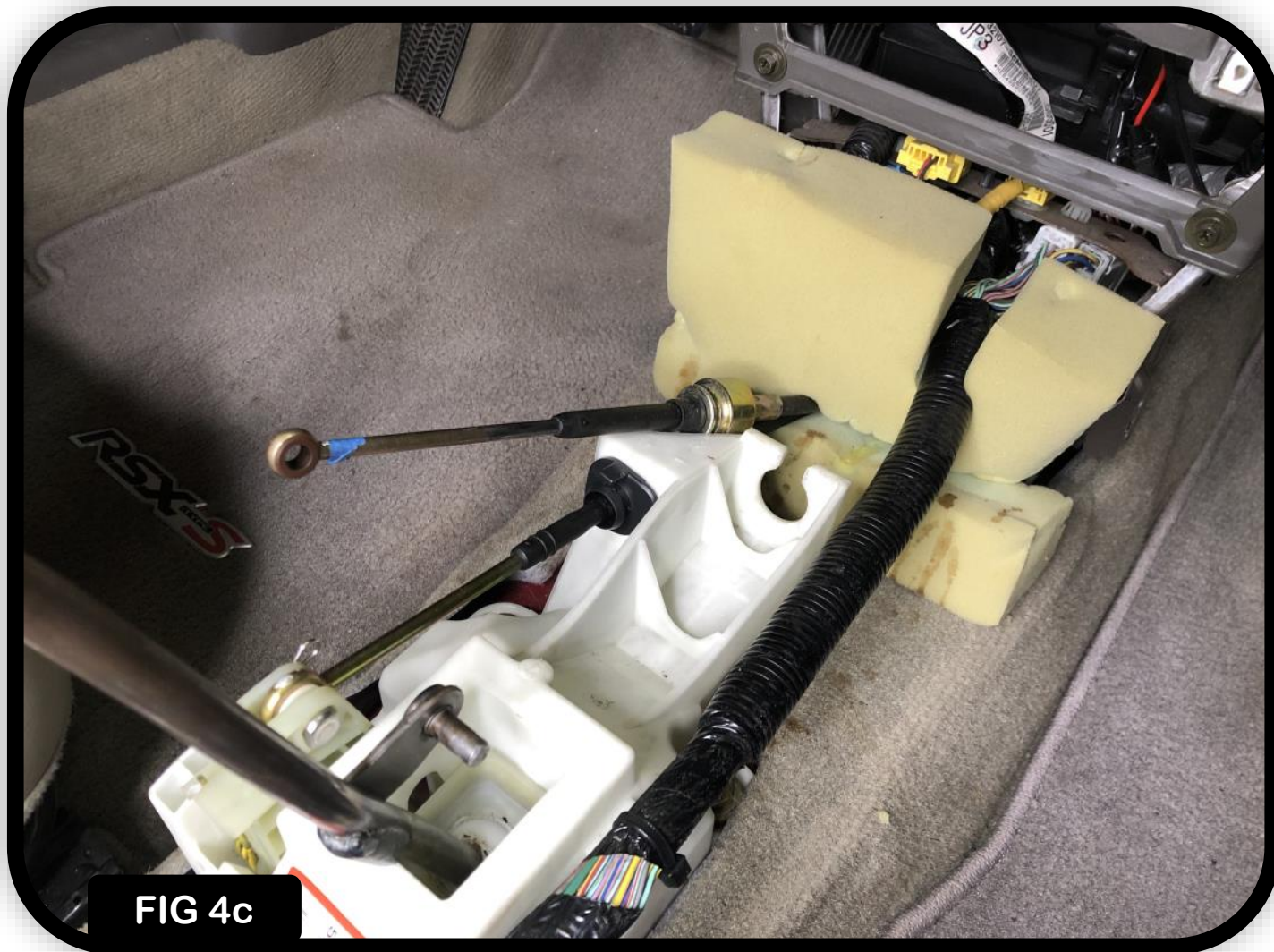
## STEP 4 Cont. - Disconnect Shifter Cables

Remove the cotter pin and washer securing the cable end link to the shift lever pin.



## STEP 4 Cont. - Disconnect Shifter Cables

Slide the gear cable end link free from the shift lever pin, then push the cable forwards to release the cable base from the frame, and move aside as seen below.



## STEP 4 Cont. - Disconnect Shifter Cables

Remove the cotter pin securing the gate cable end link.



## STEP 4 Cont. - Disconnect Shifter Cables

Slide the gate cable pin free from the gate change rocker and remove the gate cable end link from the rocker.



FIG 4e

## STEP 4 Cont. - Remove OEM Shifter

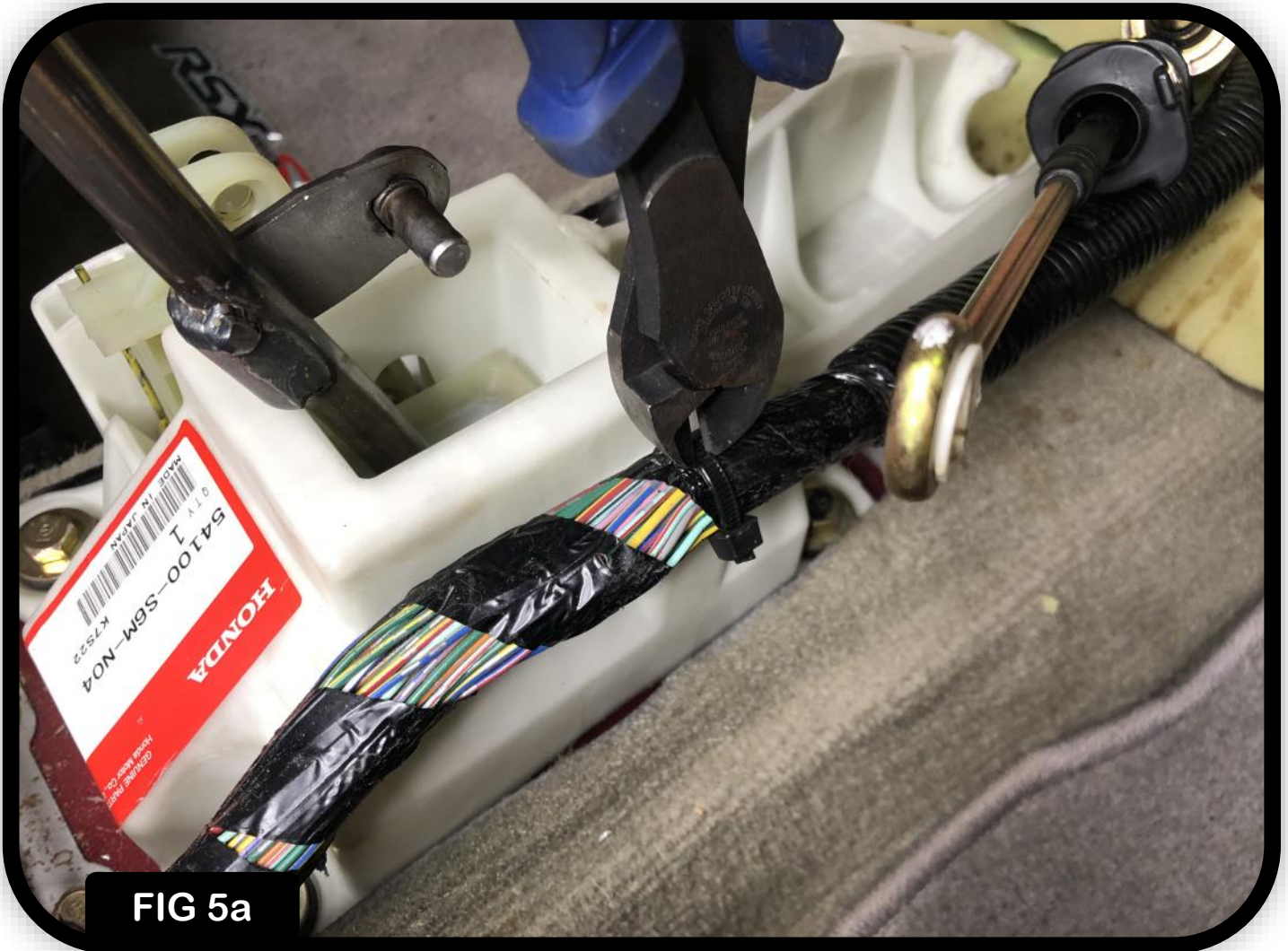
Rotate the gate cable base 90 degrees counter-clockwise to align the slot of the mounting hole with the flat surfaces of the cable base, and slide it outwards to the left side of the shifter.



# ACUITY

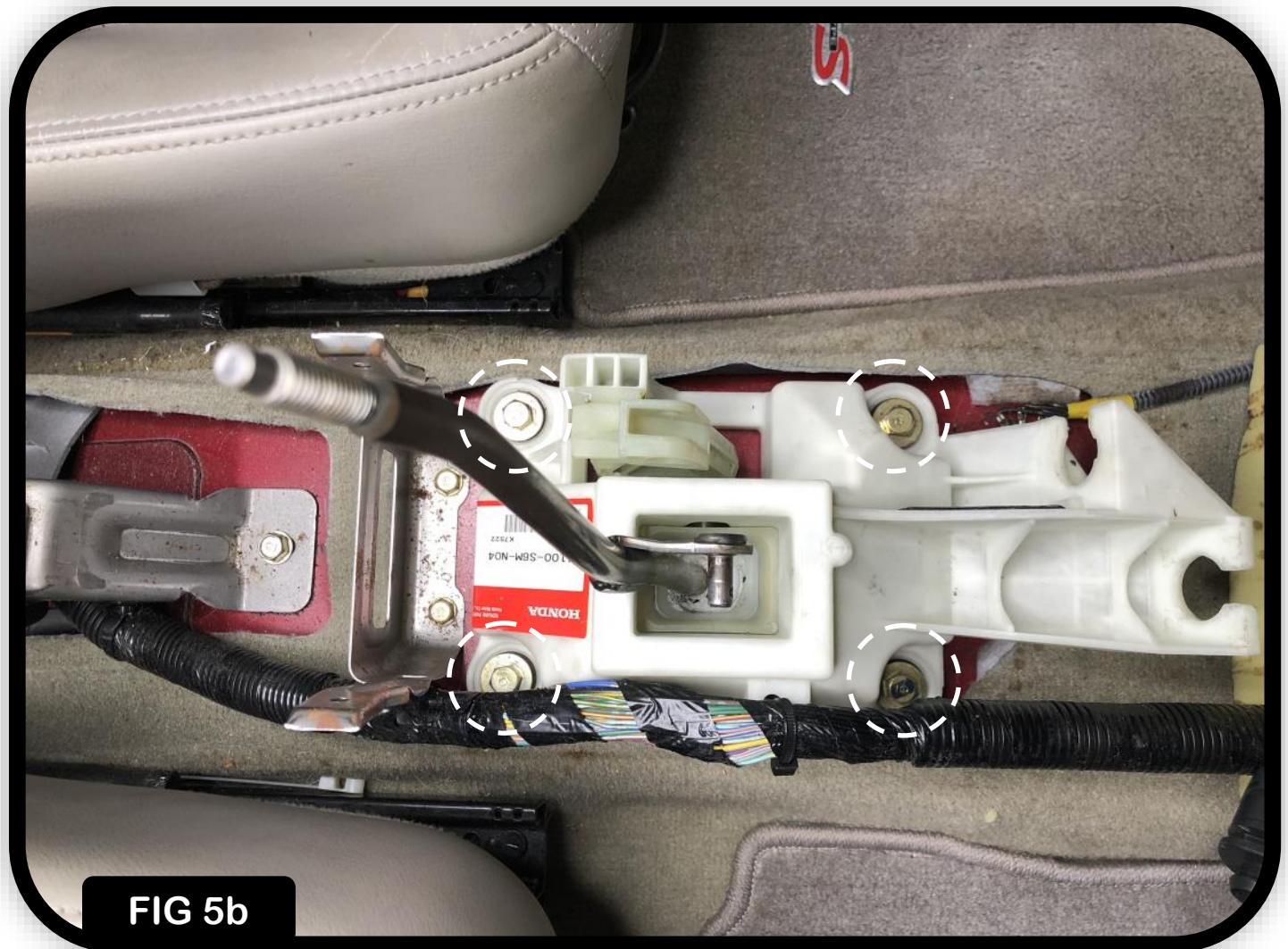
## STEP 5 - Remove OEM Shifter

Using a pair of wire cutters, cut the zip tie securing the chassis harness to the OEM shifter frame and move the harness to the side for access to the right side mounting screws.



## STEP 5 Cont. - Remove OEM Shifter

Next, you will need to remove the (4) M8 hex screws circled below.





## STEP 5 Cont. - Remove OEM Shifter

Using your ratchet, extension, and 12mm socket, remove the (4) M8 mounting hex screws affixing the shifter to the chassis.



FIG 5c

## STEP 5 Cont. - Remove OEM Shifter

With the shifter now removed, it should appear the same as shown below. At this time, it is best to clean the shifter mounting surface.



# ACUITY

## STEP 6 - Install ACUITY Short Shifter

Place your new short shifter on the shifter mounting surface and thread the (4) mounting screws with the (4) purple washers as shown below. Screw in all (4) screws finger tight first until all the screws are installed.

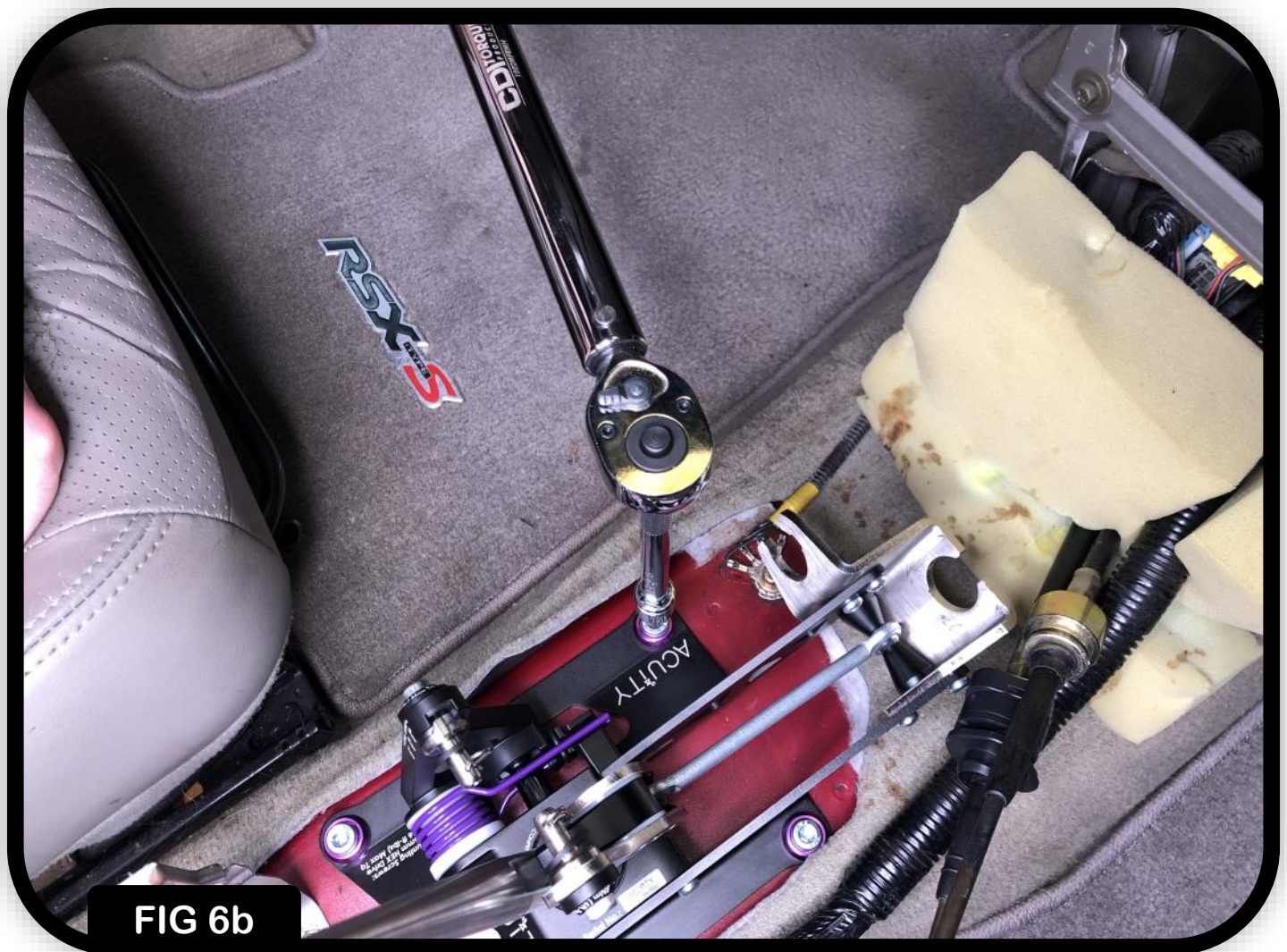


FIG 6a

# ACUITY

## STEP 6 Cont. - Install ACUITY Short Shifter

Using your torque wrench, extension, and 6mm allen socket, torque each of the (4) mounting screws to 16 Ft-lbs (22Nm).



# ACUITY

## STEP 7 - Install Shifter Cables

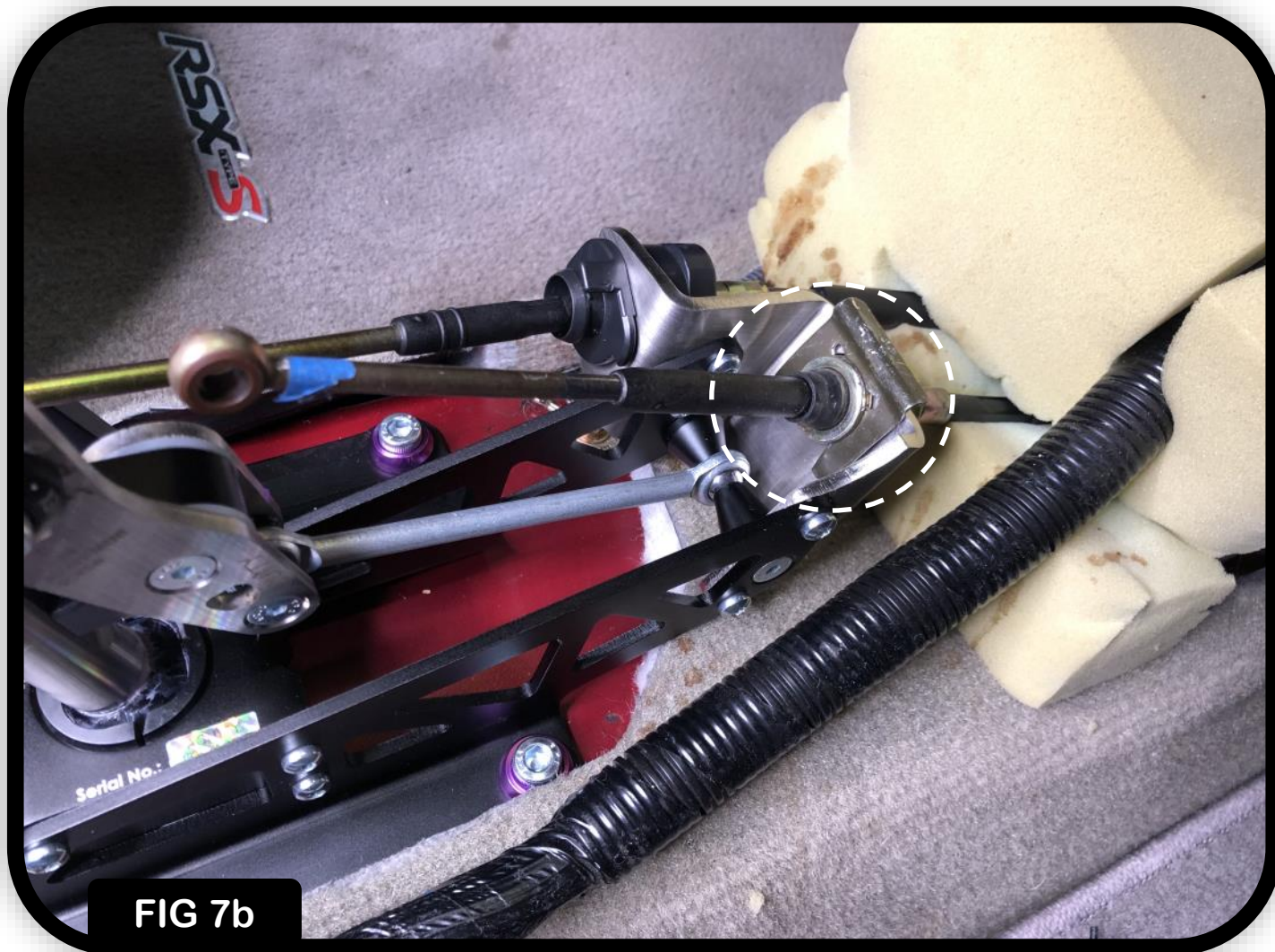
As we did with the removal of the gate change cable, rotate the cable 90 degrees counter-clockwise to align the slot of the mounting hole with the flat surfaces of the cable base, and slide it inwards from the left side. Then rotate the cable base 90 degrees clockwise to lock into position as shown below. (This cable base fully installed can be seen on the next page in Figure 6d)



# ACUITY

## STEP 7 Cont. - Install Shifter Cables

Push the gear change cable forward, insert into it's respective mounting hole, and install the C-clip retainer from the top as shown below.



## STEP 7 Cont. - Install Shifter Cables

Remove the cotter pin and black plastic washer from gate rocker pin. Then, slide the gate change cable end link onto the rocker pin from the right side of the shifter.



## STEP 7 Cont. - Install Shifter Cables

With the gate change cable end link installed onto the rocker pin, slide the black plastic washer removed from the previous step onto the pin first. Then, install the cotter pin to secure.

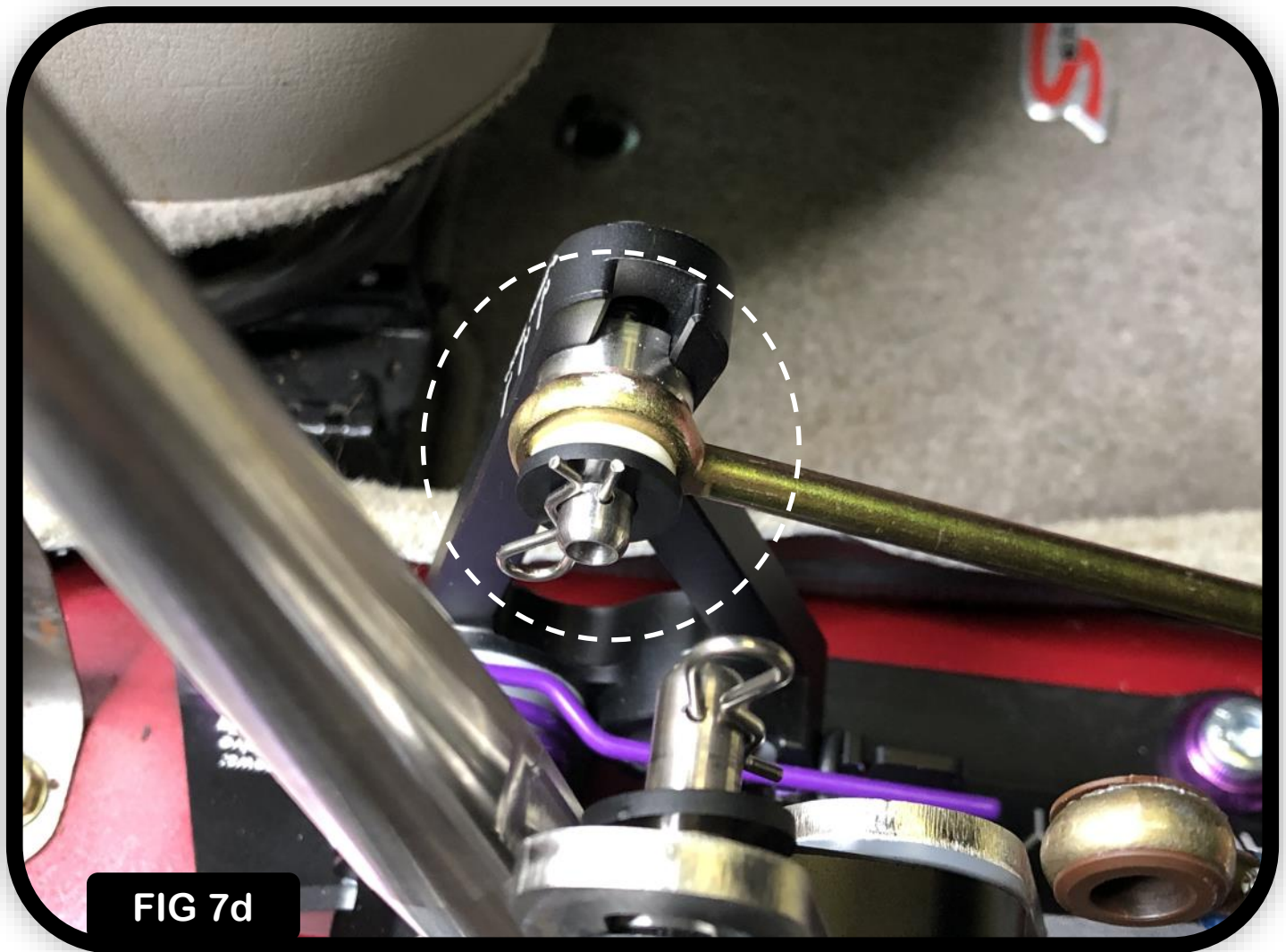


FIG 7d



## STEP 7 Cont. - Install Shifter Cables

Remove the cotter pin and black plastic washer on the gear change rocker pin. Then, slide the gear change cable end link onto the gear change rocker pin.

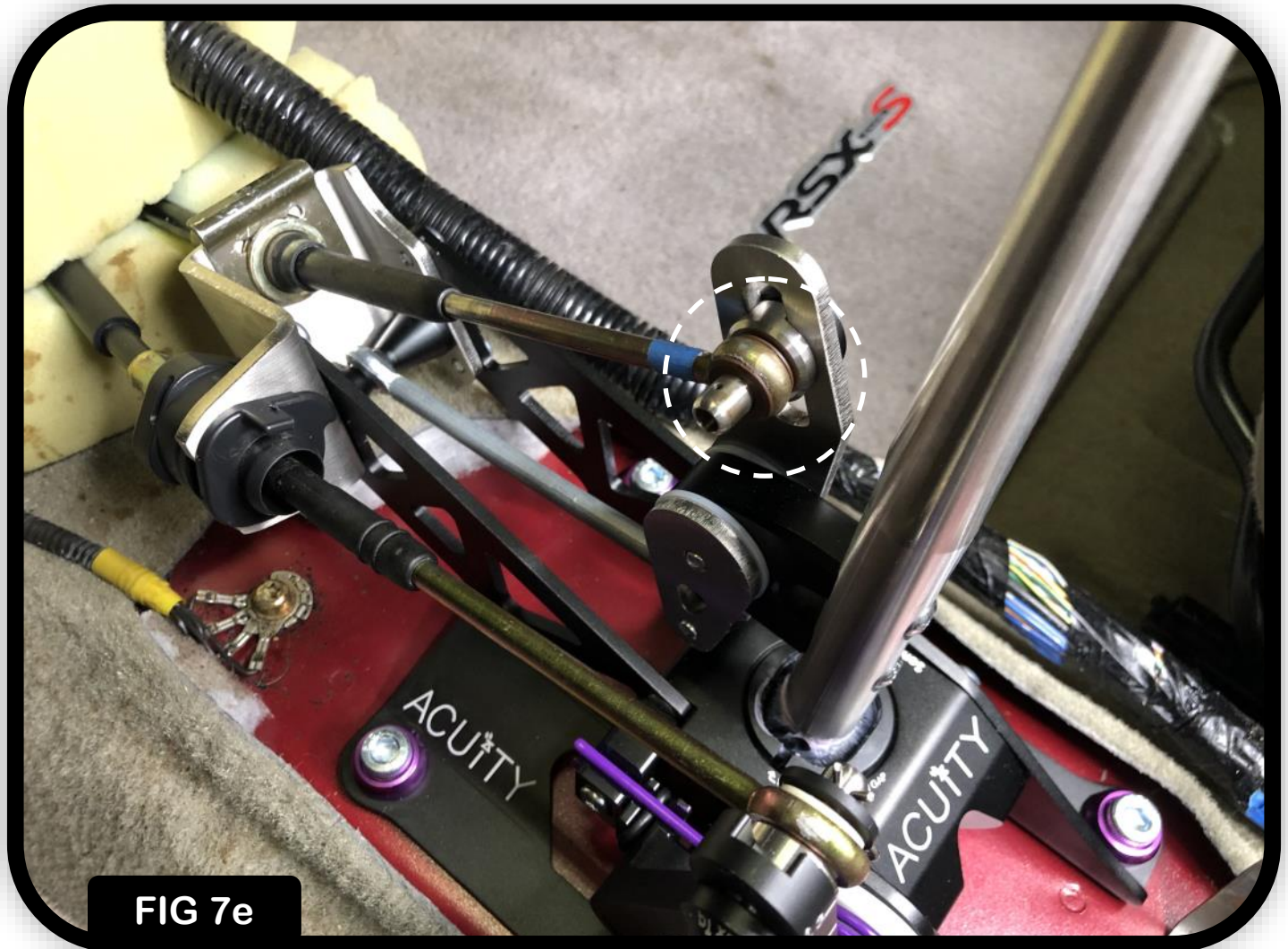


FIG 7e

# ACUITY

## STEP 7 Cont. - Install Shifter Cables

With the gear change cable end link installed onto the rocker pin, slide the black plastic washer removed from the previous step onto the pin first. Then, install the cotter pin to secure.

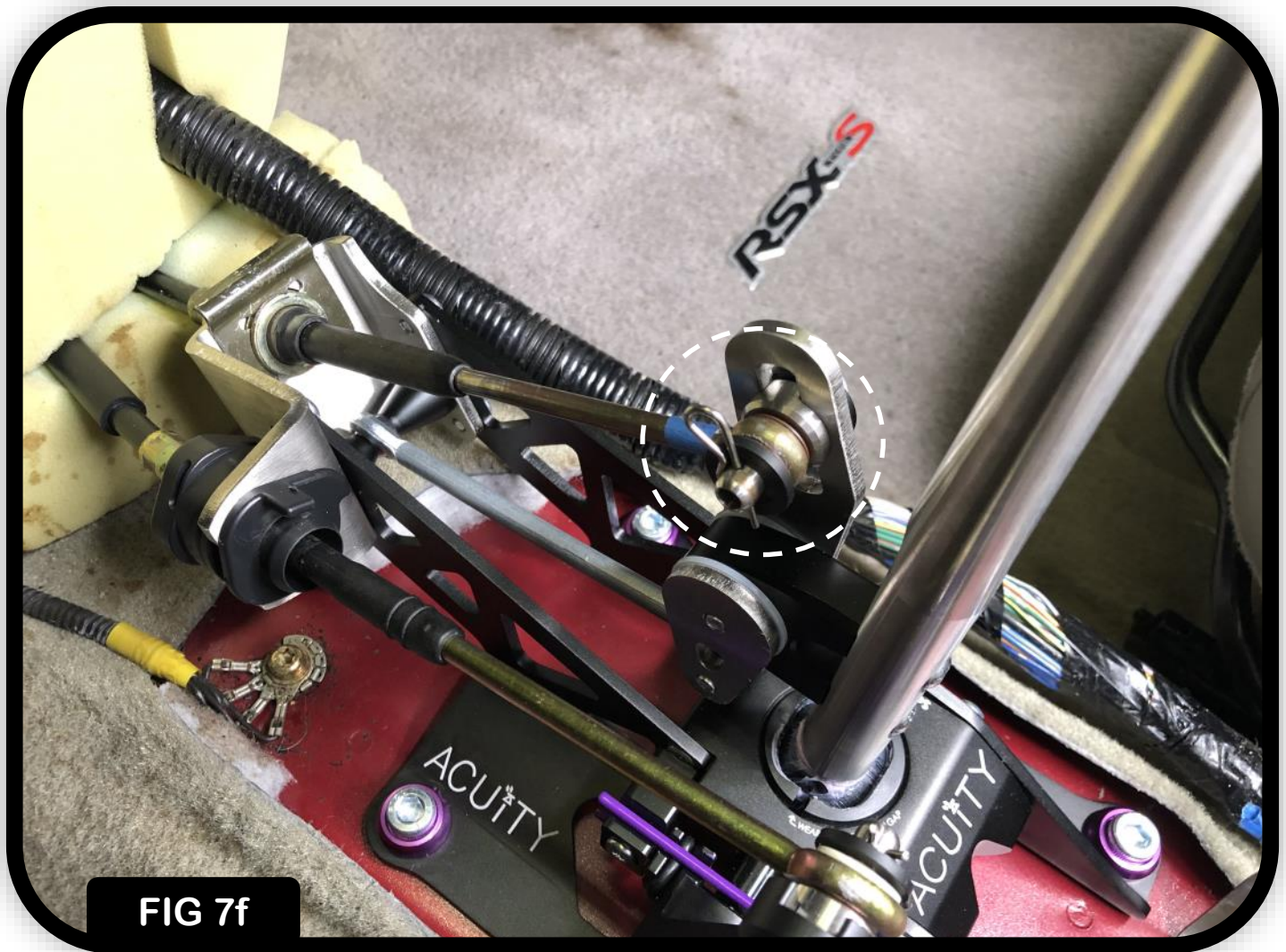


FIG 7f

# ACUITY

## STEP 8 - Install Upper Shift Lever, Adjust Position/Height (4-way version ONLY)

Install the upper and midrod assembly into the silver lower rod of the shifter and secure in the desired position by torquing the position adjustment screw (purple arrow) to 7 Ft-lbs (9Nm) from the top side. *(NOTE: To change the position adjustment, loosen the screw until the taper fit has unlocked and rotate to any desired position and re-torque)*

With your position adjusted to your liking, you can then adjust the height of your shift lever by loosening the height adjustment screw (teal arrow) and slide up or down between positions 1 and 5. With the height adjustment in your desired location, torque the adjustment screw to 5 Ft-lbs (7 Nm). *(NOTE: Position 1 is 30mm lower than the stock knob height, position 5 is 30mm higher than the stock knob height)*



FIG 8a

# ACUITY

## STEP 9 - Gate Spacing Adjustment (2-way and 4-way versions)

To adjust your gate spacing, loosen the gate spacing adjustment screw (purple arrow) and slide up or down between positions 1 and 3. Position 3 will give you the narrowest gate spacing and position 1 will give you widest gate spacing. Once you have adjusted your gate spacing to the desired position, torque the adjustment screw to 6 Ft-lbs (8Nm).

### Gate Spacing Adjustment Ranges

2-Way Version: 18%-36% less than stock

4-Way Version: 9%\*-41%\*\*less than stock

*\*min throw reduction based on knob at the tallest height setting*

*\*\*max throw reduction based on knob at the shortest height setting*



FIG 9a

# ACUITY

## STEP 10 - Gear Throw Adjustment (2-way and 4-way versions)

To adjust your gear throw, loosen the gear throw adjustment screw (purple arrow) and slide up or down between positions 1 and 3. Position 3 will give you the shortest gear throw and position 1 will give you longest gear throw. Once you have adjusted your gear throw to the desired position, torque the adjustment screw to 6 Ft-lbs (8Nm).

### Gear Throw Adjustment Ranges

2-Way Version: 40%-50% less than stock

4-Way Version: 34%\*-55%\*\* less than stock

*\*min throw reduction based on knob at the tallest height setting*

*\*\*max throw reduction based on knob at the shortest height setting*



FIG 10a

## STEP 11 - Reinstall Center Console and Shift Knob

Follow steps 1-3 in reverse to reinstall your center console. If you have the 2-way version, make sure to remove the black plastic protective cap on the shift lever before re-installing your shift knob.



## Revision History

**Rev 1.0**

**Date:** October 21, 2020

**Change:** Document Published

*This product is eligible for a 1 year warranty against manufacturer defect with valid proof of purchase.*